



TECHNICAL DATA SHEET
ID Product Code 200
Rev. 02/2025

SELLO TILEPROOF

ANTISTAIN FOR BACK AND SIDES OF STONE TILES

Special powder that reduces rising of moisture and increase gripping power of natural and engineered stone floor tiles

SELLO is a waterproofing product, single component, based on cement with hydraulic binders, mineral fillers, dispersible polymers and special additives; SELLO is not toxic and is used on stone and cement floors application, protecting the back and sides of tiles against rising moisture and other materials that may cause stains on the top face of tiles. SELLO can be used for waterproofing as specified in DIN 18 195 for agglomerates and natural stones with or without extra reinforcing components (i. e. polyester and fiber mesh) for areas with pressure ≤ 1.5 bar. SELLO also increases gripping power of tiles to the mortar. It is recommended for marble, granite, limestone, natural and agglomerate stone and cement floors. Ready to use (just add water), easy to apply (paint roller with lamb's wool or brush), it prevents formation of salts and stains.

Instruction for use

Clean the surface from dust, oil, grease, release agents, cement or other debris that may prevent good adhesion of SELLO or formation of the layer.

Pour the SELLO powder into the water and mix until the product is homogeneous and free from lumps.

Method of application	Mixture
BRUSH	In a clean and sealed container, put 10 parts of SELLO plus 4 parts of water (i.e. 1 Kg. SELLO + 400 grams water). 4 liters of water for each bag of 10 kg.
ROLLER	In a clean and sealed container, put 10 parts of SELLO plus 5 parts of water (i.e. 1 Kg. SELLO + 500 grams water). 5 liters of water for each bag of 10 kg.

Let the mix rest for 10 minutes.

After the rest time, apply the first layer of SELLO on back and sides of tiles, with lamb's wool roller or with a brush.

After superficial drying of SELLO (3 to 5 hours), apply a second, cross-handed layer, again on back and sides of tiles.

Application example:



Distinctive adhesion properties:

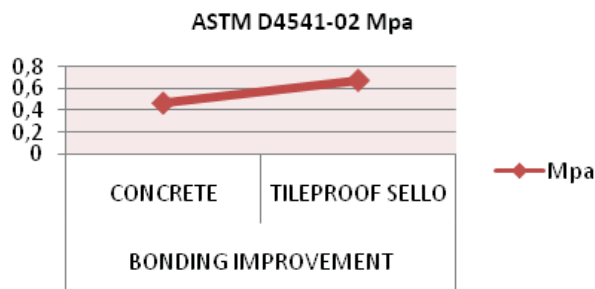
TEST ASTM D4541-02 PULL OFF STRENGTH

Test have been carried on near an independent laboratory (Test Report 274/1 – 275/1 – laboratory: TECHNOGEO S.R.L. report available upon request):

TILE LAID ON REGULAR CONCRETE SCREED = 0,47 MPa (47 N/cm²)

TILE LAID ON REGULAR CONCRETE SCREED WITH SELLO ON THE BACK SIDE OF THE TILE: = 0,68 MPa (68 N/cm²)

Graphic representation of bonding improvement

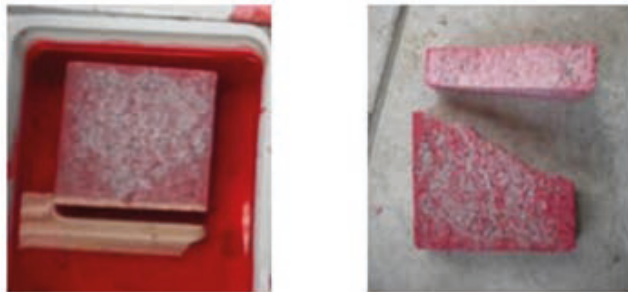


Adhesion of TILEPROOF SELLO alone on stone surface

Ref: Test 272/1 dtd 05/06/2013 standard ASTM D4541-02 comments: once applied the layer of TILEPROOF SELLO on granite surface, the result of the PULL OFF STRENGTH is 0,40 MPa= (40 N/ cm²).

Efficiency as protective “membrane” against rising humidity:

Stones without application of waterproofing SELLO:



Stones with application of waterproofing SELLO:



Application tools

Brush, roller, or appropriate tool.

Suggestion for use and recommendations:

After addition of water to SELLO, use the obtained mix within 2 hours and 30 minutes (pot life).

Temperatures of application: temperature of air from 5° to 40°C - temperature of materials from 5° to 30°C

Apply on back and sides of the stones.

Use opened bags as soon as possible.

If mortar will not be used, always use a tile adhesive of minimum quality C2 to lay the stone

Wear rubber gloves and goggles when using the product.

Keep out of reach of children and pets.

Avoid prolonged contact with skin, in case of prolonged contact, wash hands with plenty of clean water and if irritation persists seek medical attention immediately.

Application surfaces

Marble, granite, engineered & artificial stones, cement, marble reinforced with fiberglass net.

Chemical characteristics

Appearance	Powder
Colour	Whitish (Beige or Gray available)
Odor	Odorless
Bulk density	1,5 kg/l
pH	N.A.
Superficial drying time at 25°C (77° F)	3-5 hours*
Waterproof	After 4 hours*
Impermeability to water (DIN 1048, part 5)	Impermeable up to 1,5 bar
Bending tensile strength	Approx. 2 N/mm ² after 2 days, approx 4 N/mm ² after 28 days
Ready for installation	After 24 hours on floors, after 72 hours for walls*
Release of dangerous substances	See MSDS
Shelf life	24 months if stored tightly closed in a cool and dry place
* indicative values, depending on the nature of the material and environmental conditions	

Coverage

Yield of SELLO is approximately 0,6 Kg/m², for the necessary two layers. Consumption and yield vary with porosity of stone.

Storage

24 months in original intact packaging and stored in a dry place.

Packing

Available 10 Kg bags. Colors available: White, Beige, Grey. Minimum batch 1000 kg.

Environmental information

TILEPROOF SELLO complies SCAQMD for V.O.C. Approved LEED Adhesives and Sealants IEQ Credit 4.1 – V.O.C. CONTENT: < 0,01 g/l

Safety procedures

As far as the proper working procedures is concerned, we recommend to consult Material Safety Data Sheets issued according to E.U. rules and to follow your national laws concerning safety in the working place. MSDS is available on our web site www.primaxbuild.it

Trademark and Origin of the good

PRIMAX® is a registered trademark of Bellinzoni company. The law considers a trademark to be a form of property and any misuse can be persecuted by law. Bellinzoni s.r.l. declares that our product SELLO is MADE IN ITALY.

DISCLAIMER All data indicated in this leaflet are the results of tests and experiments carried out in our laboratories and through reliable operators in the stone business and have to be considered reliable. Because of the many factors which can influence them, the information here reported do not constitute implicit or formal guarantees. The end user undertakes the responsibility in the usage of the product making sure to experiment the product characteristic as preventive measure